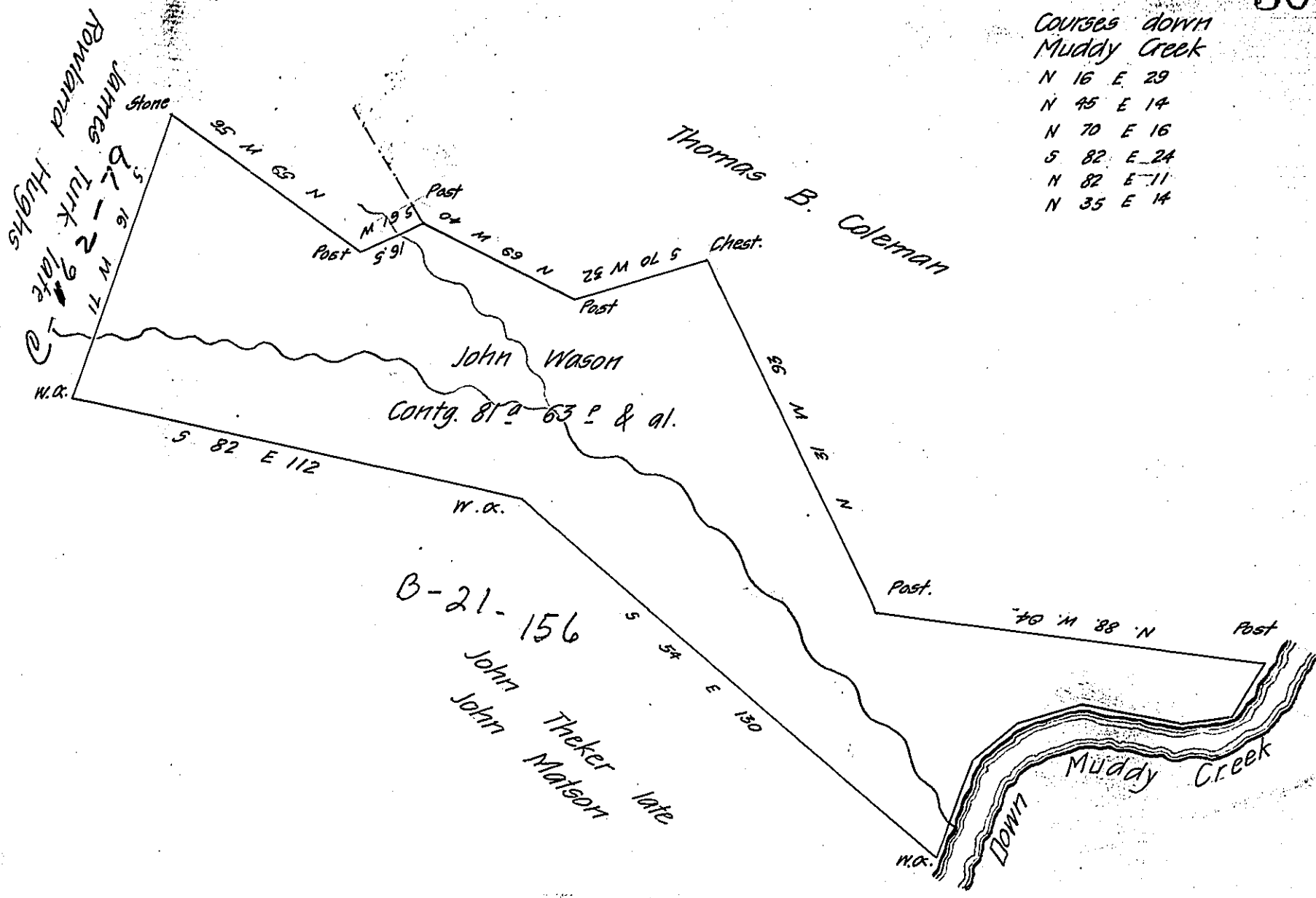


FORM No 1.



Courses down
Muddy Creek
 N 16 E 29
 N 45 E 14
 N 70 E 16
 S 82 E 24
 N 82 E 11
 N 35 E 14

Situate in Lower Chanceford township in the County of York containing as above set forth 81⁹ 63 perches & the usual allowance &c. Surveyed on the 9 day of June 1831 in pursuance of a warrant granted to John Wason for 200⁹ dated the 24 of August 1765 and by virtue of the Contract entered into with the Board of Property.

Report the above Land is wholly the same which was surveyed in pursuance of a warrant granted to John McClean dated the 18 day of December 1786 Now owned and occupied by Thomas B. Coleman Esq.

To the Board of Property
 Danl Small

— McClean not Pat^d

IN TESTIMONY that the above is a copy of the original remaining on file in the Department of Internal Affairs of Pennsylvania, made conformably to an Act of Assembly approved the 16th day of February, 1833, I have hereunto set my Hand and caused the Seal of said Department to be affixed at Harrisburg, this seventeenth day of September 1908

Henry Howell
 Secretary of Internal Affairs.